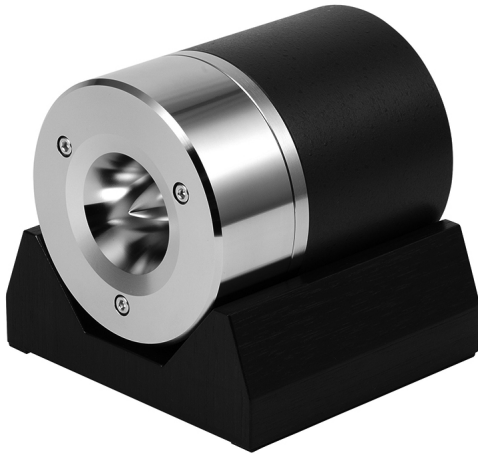


Horn Super Tweeter



T500A Mk III

T500AMk III is the highest grade of high performance horn super tweeter. It offers high-frequency reproduction extending well outside the audible range with excellent transients, and realizes a natural, penetrating and expressive sound.

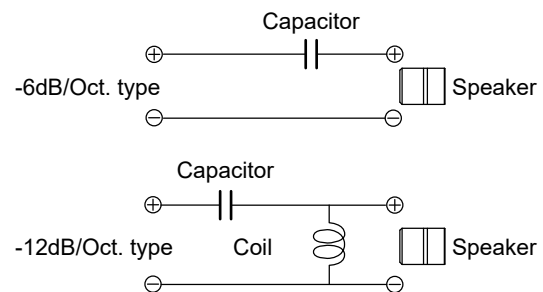
Main Features

- * **Ring shape pure magnesium diaphragm**
The newly developed ring-shaped pure magnesium diaphragm has less squeal unique to metal, and realizes ultra-high frequency reproduction with penetrating power by having optimized the material thickness and the surface treatment.
- * **Low distortion Alnico internal magnetic circuit**
The magnetic circuit constructed with the two-layer Alnico magnets has a strong magnetic flux density. The current distortion is greatly reduced by applying copper plating to the pole piece surface, and high sound quality is realized.
- * **Platinum-plated brass horn / equalizer**
Equipped with a precision cutting cylindrical horn and equalizer made of solid brass, and by applying platinum plating to the surface treatment, it offers a fast rising, natural and highly transparent sound.
- * **Gold-plated terminal for banana plug / Copper and Silver alloy wiring**
The input terminals are gold-plated and corresponding to a banana plugs. The internal wirings use a high-quality $\phi 1.4\text{mm}$ copper/silver alloy single wire.
- * **Tungsten diaphragm ring**
A tungsten sheet with a high damping effect is used for the diaphragm ring that supports the diaphragm and reduces sound quality deterioration by avoiding unnecessary vibration.
- * **Walnut veneer finish tweeter base**
It comes with a tweeter base that can securely support the heavy tweeter body. The surface is covered with walnut veneer and colored dark brown to give an elegant appearance.

How to Use

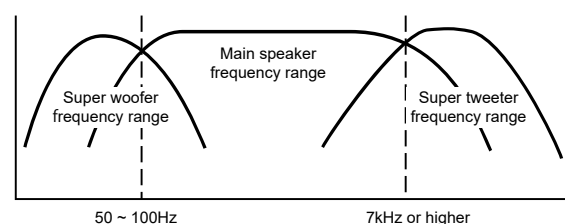
- * Never directly connect this product to a power amplifier without passing through a network circuit or conduct a continuity test using a battery. This may damage its voice coil causing disconnection, abnormal noise, or other failures.
- * Set the crossover frequency according to the high frequency reproduction of the system to combine with. Set the crossover frequency to 7 kHz or above for this product.
- * When combined with a highly efficient system, it can be used in a 6dB / Oct. network only consisting of a capacitor. We recommend the capacitor value should be 1.5 μF or smaller. If the tweeter output level is too high, it is better to use the attenuator for adjust the level.
- * If using this product in a 2-way or 3-way system, we recommend a network of 12dB / Oct. or higher to avoid interference in the crossing frequency band and connect as smoothly as possible. If the tweeter output level is too high, it is better to use the attenuator for adjust the level.
- * The components used in the network circuit will affect the sound quality, so select the highest quality parts as possible.
- * The components used in the network circuit will affect the sound quality, so select the highest quality parts as possible.

Network Schematic Diagram



Utility of Super Tweeter

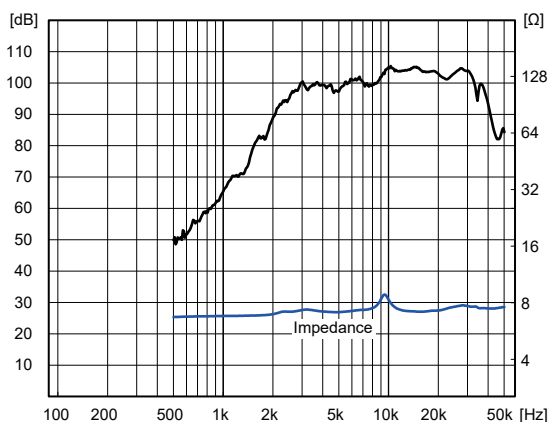
Adding a super tweeter to an existing speaker system not only extends the high-frequency range reproduction, but also improves the transient characteristics to improve the sharpness, clarity and sensitivity of the sound, and increases expressive ability. The speaker phase characteristics will also be improved, and the sound image localization will become clearer, allowing for realistic music reproduction. The similar effect can be obtained by adding super woofer, which reinforces the low frequency range and its sound pressure level, but adding a super tweeter will further improve overall performance such as expressiveness and realism of music reproduction.



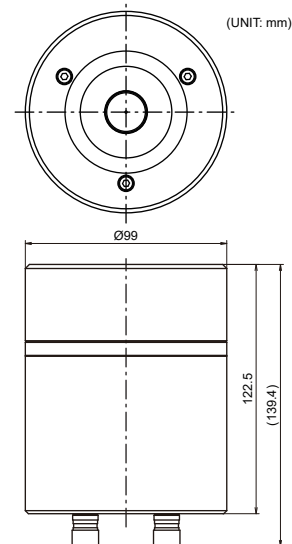
■ Specifications

Impedance	: 8 Ω
Repro. Freq. Response	: 7 kHz ~ 40 kHz (-10 dB)
Sound Pressure Level	: 104 dB/W(1m)
Rated Input	: 15 W (NOM.)
Cutoff Frequency	: 3.5 kHz
Crossover Frequency	: 7 kHz or higher (12 dB/Oct.)
Magnet Weight	: 480 g / 1.05 lb (ALNICO)
Net Weight	: 5150 g / 11.35 lb
Accessories	: Tweeter Base x 1 Owner's Manual x 1

■ Frequency Response



■ External Dimensions



* Due to the nature of parts manufacturing, appearance parts may have a tiny plating unevenness, but all parts are chosen under certain standards and there is no problem in quality.

••••• Safety Precaution •••••

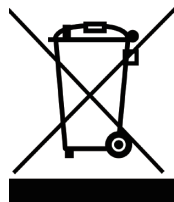
Warning

- * Do not install the apparatus near any heat sources such as radiators, heat registers, stoves, amplifiers or other apparatus that produce heat.
- * Do not expose the apparatus to direct sunlight, high temperatures / high humidity.
- * The apparatus shall not be exposed to dripping or splashing and that no objects filled with liquids, such as vases, shall be placed on the apparatus.
- * Only use attachments / accessories specified by the manufacturer.
- * Place the apparatus on a flat and stable surface.
- * Do not hang the apparatus from the ceiling / wall. Doing so may cause the apparatus to fall off, causing personal injury.
- * Avoid an extended use at high volume levels as your hearing may be permanently impaired.
- * Do not step on the apparatus as it might fall down or be broken, causing personal injury.
- * Keep the apparatus away from children.
- * Do not try to carry a large and heavy apparatus alone. Doing so may cause personal injury such as low back pain.

Caution

- * Read these instructions.
- * Keep these instructions.
- * Heed all warnings.
- * Follow all instructions.
- * Clean with a dry cloth only.
- * Refer all servicing to qualified service personnel.
- * The apparatus shall be used in an open area.
- * The apparatus uses powerful magnets. Do not place it near PC or other apparatus which can be influenced by magnetism.

Disposal of Old Electrical & Electronic Equipment Only for European Union and countries with recycling systems



This symbol on the product, packaging, and / or accompanying documents means that used electrical and electronic products must not be mixed with general household waste. For proper treatment, recovery and recycling of old products, please take them to applicable collection points in accordance with your national legislation. By ensuring that this product is disposed Correctly, you will help to save valuable resources and prevent any potential negative effects on human health and the environment. For more information about collection and recycling, please contact your local municipality. Penalties may be applicable for incorrect disposal of this waste, in accordance with national legislation.

Fostex

FOSTEX COMPANY
1-1-109, Tsutsujigaoka, Akishima City, Tokyo, 196-8550, Japan